

IC-7800

Firmware update information

Thank you for using the Icom Download Service.

The following functions will be added to your IC-7800 when firmware updating is performed with the downloaded firmware.

- Firmware update capability with CF memory card (New feature; p. 5)
- Screen saver function (New feature; p. 7)
- Selectable keyboard type (Selections are added; p. 7)
- Independent ¼ tuning function operation in Main and Sub bands. (p. 7)

■ About firmware update

◇ Connections

To update the transceiver's firmware, a PC that is equipped with an Ethernet board/card is required.

If no Ethernet board/card is equipped with your PC, install a suitable Ethernet board/card (10 BASE-T/100 BASE-TX).

Ask your PC dealer for details about an Ethernet board/card.

The connections may differ according to your PC condition.

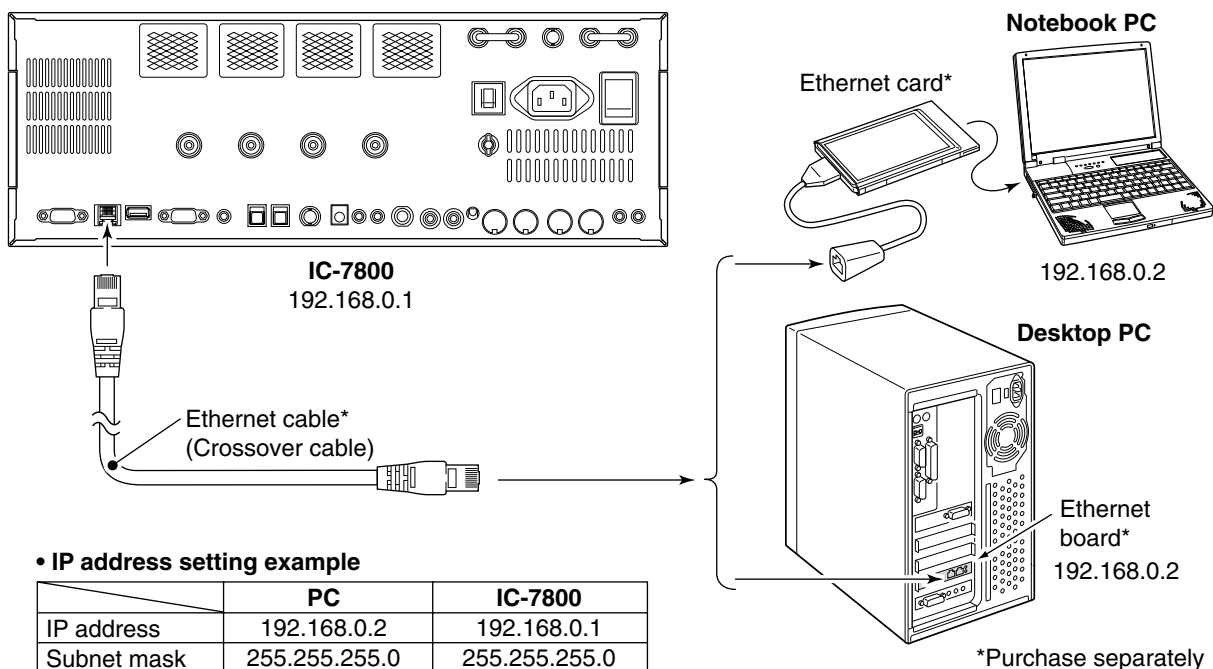
Confirm your PC condition and refer to the appropriate instructions as follows;

- When only one PC that is connected to the internet is available;
 - Refer to ◇ Direct connection as below.
- When two or more PCs are connected to the internet and are also connected in the LAN (Local Area Network) are available;
 - Refer to ◇ Connect to LAN (p. 2), or ◇ Direct connection (see below).

◇ Direct connection

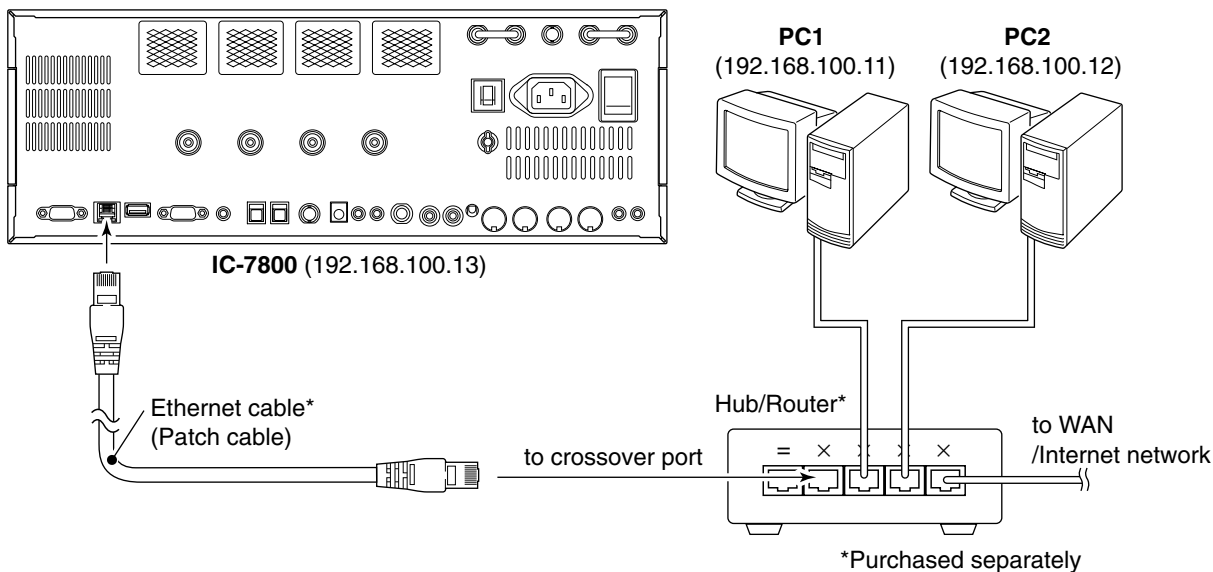
Connect the IC-7800 and the PC using an Ethernet cable (crossover cable) as below.

Both IP address and subnet mask settings are required for the PC. Refer to the instruction manual that is supplied with the PC or Ethernet board/card for setting details.



◇ Connect to LAN

Connect the IC-7800 and the PC through a LAN (Local Area Network) as follows.



• IP address setting example

	PC1	PC2	IC-7800
IP address	192.168.100.11	192.168.100.12	192.168.100.13
Subnet mask	255.255.255.0	255.255.255.0	255.255.255.0

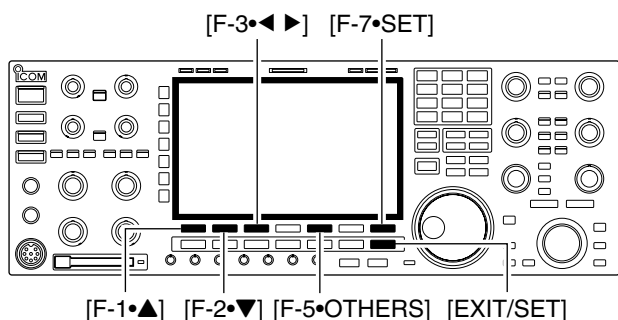
◇ IP address setting

IMPORTANT!: A fixed (static) IP address is used for the IC-7800.

When you connect the IC-7800 to a LAN, ask the network manager about a usable/assignable IP address and the subnet mask in advance.

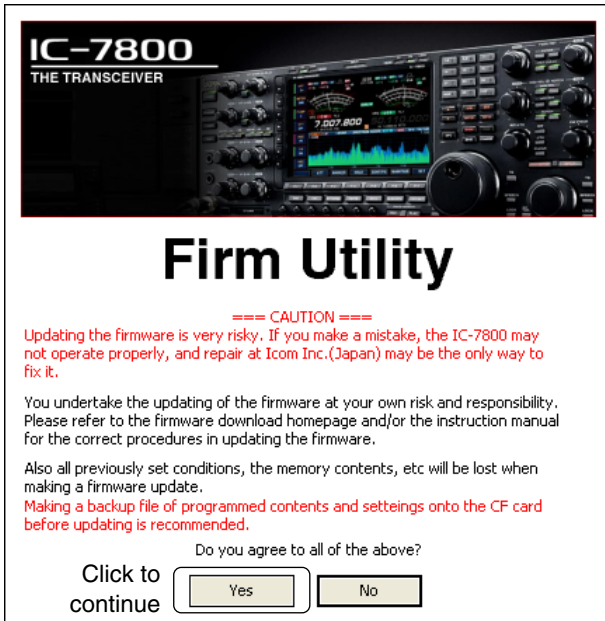
NEVER set the IP address that has already been used with another device in the network. If the IP address is duplicated, the network will crash down.

- ① Push [EXIT/SET] several times to close a multi-function screen, if necessary.
- ② Push [F-7•SET] to select set mode menu screen.
- ③ Push [F-5•OTHERS] to select miscellaneous (others) set mode.



- ④ Push [F-1•▲]/[F-2•▼] several times to select “IP Address” item.
- ⑤ Push [F-3•◀▶] to select the desired part then rotate main dial to set the desired or specified IP address.
 - “192.168.0.1” is the default setting.
- ⑥ Push [F-2•▼] to select “Subnet Mask” item.
- ⑦ Rotate main dial to set the desired or specified subnet mask.
 - “255.255.255.0” is the default setting.
- ⑧ Push [POWER] to turn the transceiver power OFF, then ON to effect the IP address and subnet mask settings.

◇ Updating the firmware

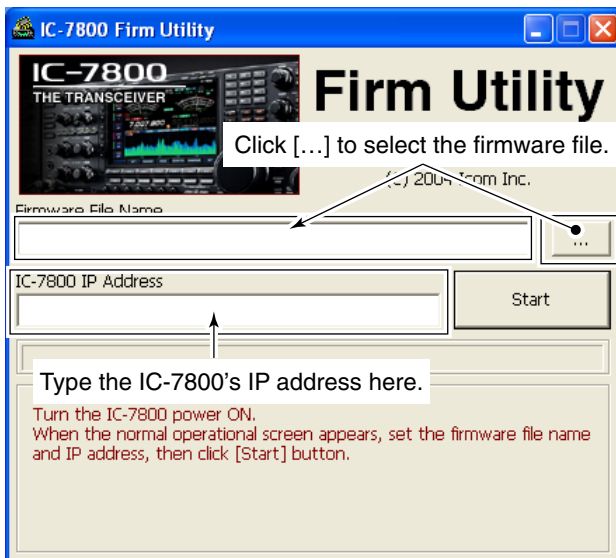


- ① Start up the IC-7800 Firm Utility.
 - The window as at left appears.
- ② Read the caution in the window carefully.

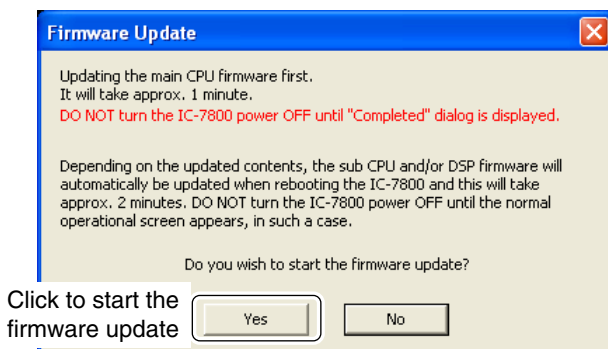
Recommendation!

Backing up the settings and/or memory contents to the CF memory card before starting the firmware update is recommended. Settings and/or memory contents will be lost when the firmware update is performed.

- ③ Click [Yes] if you agree and continue the firmware updating.



- ④ Select the firmware file, that has “dat” extension (e.g.: 7800_110.dat).
 - Click [...], then select the file, as well as the location.
- ⑤ Type the IC-7800's IP address into “IC-7800 IP Address” text box.
- ⑥ Click [Start].

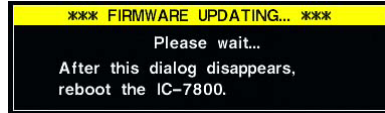


- ⑦ The window as at left appears.
 - Read the precaution in the window carefully.
- ⑧ Click [Yes] if you want to start the firmware update.

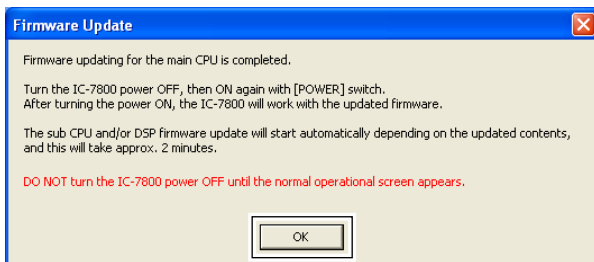
(☞ Continue to the next page)



- ⑨ The screen as at left is displayed.
- The following dialog appears in the IC-7800 display.

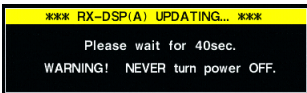
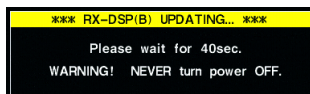


- ⚠ **WARNING!** NEVER turn the IC-7800 power OFF at this stage.
 The transceiver firmware will be damaged.



- ⑩ Click [OK] to finish the firmware update.
- The “FIRMWARE UPDATING” dialog as shown above disappears.
- ⑪ Push [POWER] to turn the IC-7800 power OFF, then ON again.

Click [OK] to finish the firmware update.



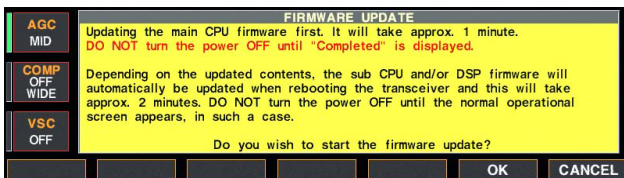
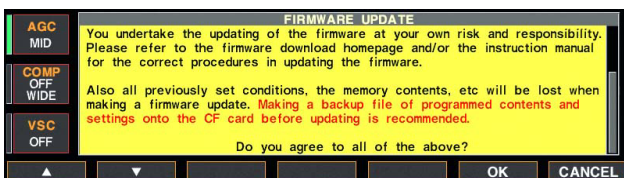
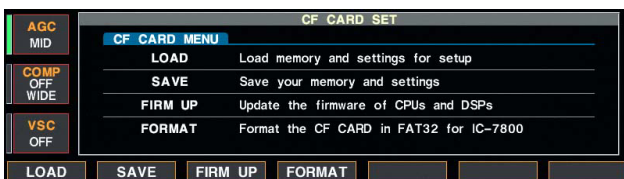
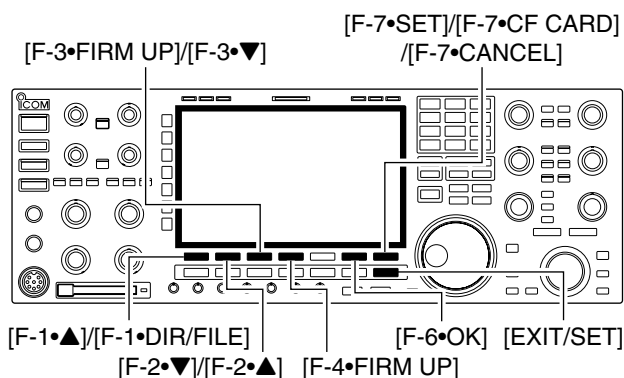
- ⑫ Depending on the updating, one to four dialogs as at left appear in the IC-7800 display in sequence.

- ⚠ **WARNING!** NEVER turn the IC-7800 power OFF at this stage.
 The transceiver firmware will be damaged.

- ⑬ After the dialog(s) disappears, the firmware updating is completed and normal operation screen appears.

■ About the new features

◇ Firmware update from the CF memory card



- ① Copy the downloaded firmware data into the CF memory card ("IC-7800" folder).
 - The CF memory card must be formatted by the IC-7800.
- ② Insert the CF memory card into the CF card slot.
- ③ Push [EXIT/SET] several times to close a multi-function screen, if necessary.
- ④ Push [F-7•SET] to select set mode menu screen.
- ⑤ Push [F-7•CF CARD] to select CF card set menu.

- ⑥ Push [F-3•FIRM UP] for 1 sec.

- ⑦ Read the displayed precaution carefully.
 - Push [F-1•▲] or [F-2•▼] to scroll the indication.
 - If you want to cancel the firmware updating, push [F-7•CANCEL].

Recommendation!
 Backing up the settings and/or memory contents to the CF memory card before starting the firmware update is recommended.
 Settings and/or memory contents will be lost when the firmware update is performed.

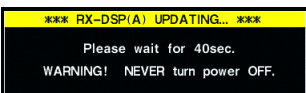
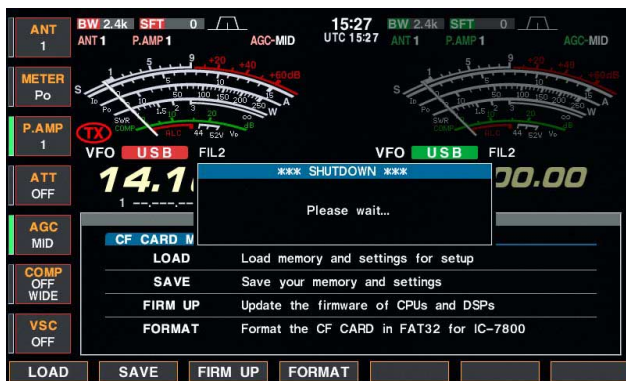
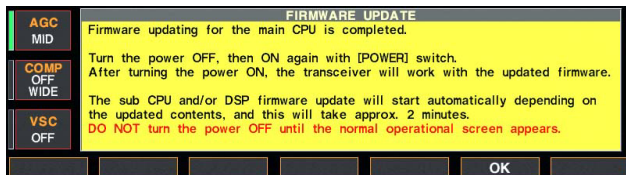
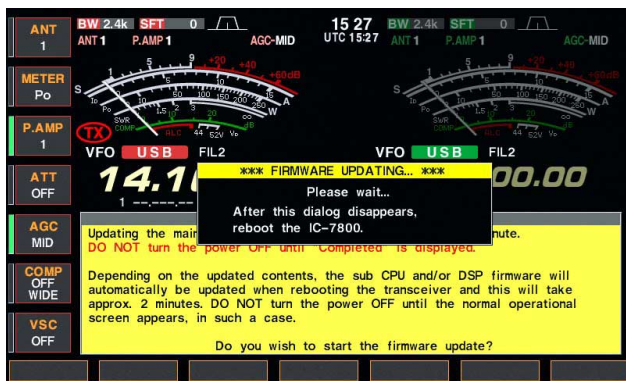
- ⑧ After you read and agree to all of the precautions, push [F-6•OK].
 - [F-6•OK] appears only when the end of the precaution is displayed.
 - Push [F-7•CANCEL] to cancel the firmware updating.

- ⑨ Push [F-2•▲] or [F-3•▼] to select the firmware file, then push [F-4•FIRM UP].

- ⑩ Read the displayed precaution carefully.
- ⑪ If you agree, push [F-6•OK] for 1 sec. to start the firmware update.
 - Push [F-7•CANCEL] to cancel the firmware updating.

- ⑫ While loading the firmware from the CF memory card, the dialog as at left is displayed.

(☞Continue to the next page)



⑬ After the firmware loading is completed, the transceiver starts the update automatically and the dialog as at left is displayed.

⚠ **WARNING!:** NEVER turn the IC-7800 power OFF at this stage.
 The transceiver firmware will be damaged.

⑭ When the dialog disappears, the precaution as at left is displayed.

⑮ Read the precaution carefully, and then push [F-6•OK].
 • Return to CF card set menu.

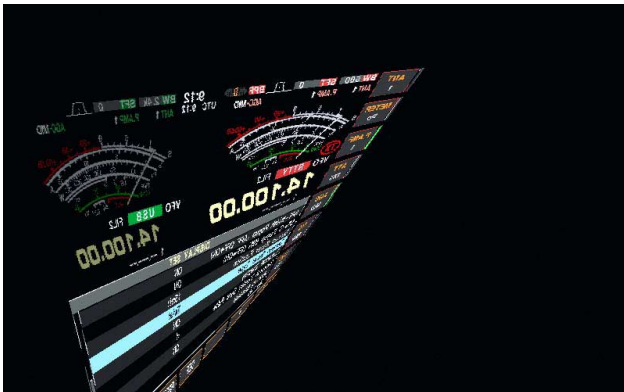
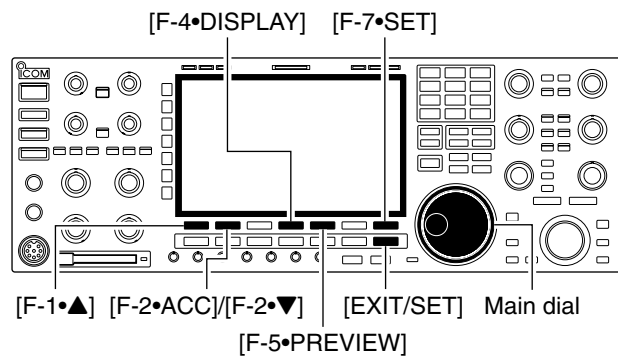
⑯ Push [POWER] to turn the IC-7800 power OFF, then ON again.

⑰ Depending on the updating, one to four dialogs as at left appear in sequence.

⚠ **WARNING!:** NEVER turn the IC-7800 power OFF at this stage.
 The transceiver firmware will be damaged.

⑱ After the dialog(s) disappears, the firmware updating is completed and normal operation screen appears.

◇ Screen saver function



The screen saver function protects the LCD from potential “burn-in” effect.

- ① Push [EXIT/SET] several times to close a multi-function screen, if necessary.
- ② Push [F-7•SET] to select set mode menu screen.
- ③ Push [F-4•DISPLAY] to enter display set mode.
- ④ Push [F-1•▲]/[F-2•▼] several times to select the “Screen Saver Function” item.
- ⑤ Rotate main dial to select the desired time period for the screen saver activation from 15, 30, 60 min. and OFF.
 - Deactivate the screen saver with “OFF” selection.
- ⑥ Push [F-2•▼] to select the “Screen Saver Type” item.
- ⑦ Rotate main dial to select the screen saver type from “Bound,” “Rotation” and “Twist.”
 - Push and hold [F-5•PREVIEW] to display the indication for your reference.
- ⑧ Push [EXIT/SET] twice to exit set mode.

◇ Keyboard type selection

Currently only 2 types of keyboard can be specified—English and Japanese. The following keyboard selections are added.

- United Kingdom
- French (Canadian)
- Portuguese
- Spanish
- Italian
- French
- German
- Portuguese (Brazilian)
- Spanish (Latin American)

◇ Independent 1/4 tuning operation

The 1/4 tuning operation can be performed independently in Main and Sub bands.

Also, the 1/4 tuning indicator appears for each Main and Sub bands independently.

◇ “@” character

The character, “@,” can be used for the CW memory keyer operation.

For your information

IP address setting for PC

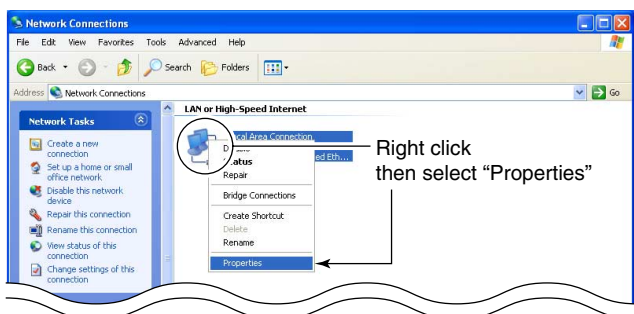
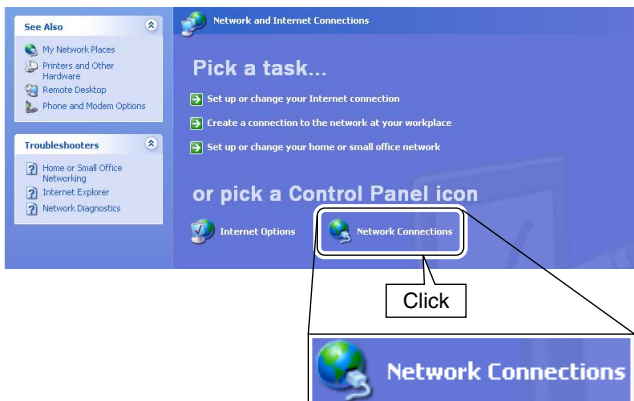
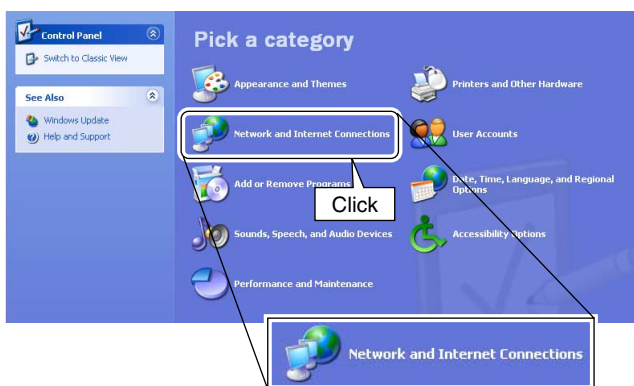
The screen shots that are used in this instruction may differ according to your PC condition.

The following instructions are for reference only and may be slightly different with your PC. Refer to the instruction manual that is supplied with the PC, Ethernet card, or a guide book, network magazines, etc., for more details.

IMPORTANT!: Before changing the IP address setting, record the current setting if the PC has been set up for an ISP or a network connection, etc. The ISP or network connection setting will be changed when the IP address setting is changed.

Icom Inc. is not responsible for any damages, lost profits or third party's claim resulting from any missed communication due to the change of the PC IP address.

◇ Microsoft® Windows® XP

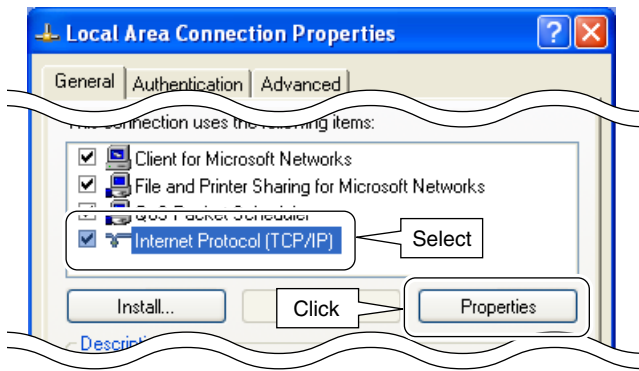


① Boot up Windows, then select the "Control Panel" in the start menu.

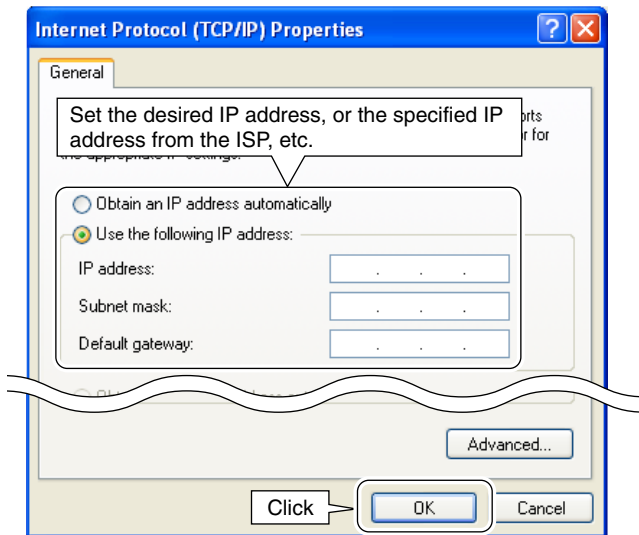
② Click "Network and Internet Connections."

③ Click "Network Connections."

④ Right click and select "Properties" in the Local Area Connections icon.



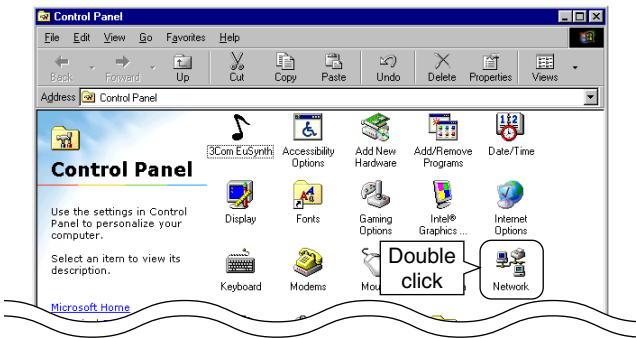
- ⑤ Select “Internet Protocol (TCP/IP)” then click [Properties].
 - Click [General] tab in advance, if necessary.



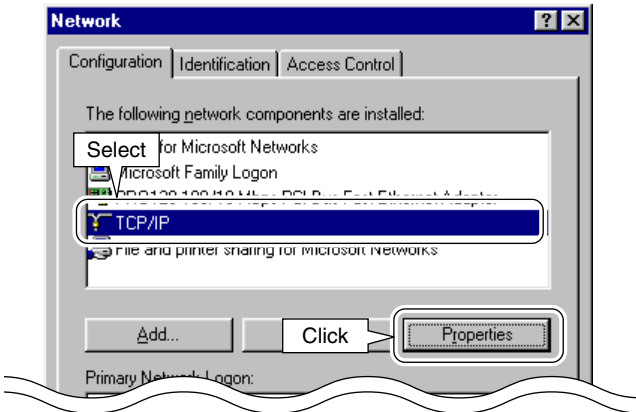
- ⑥ Set the desired IP address, or the specified IP address from the ISP.
 - Set the subnet mask, when setting a fixed IP address or if specified.
 - After the setting, click [OK].
- ⑦ Click [OK] in “Local Area Connection Properties” then reboot the PC.

◇ Microsoft® Windows® 98/Me

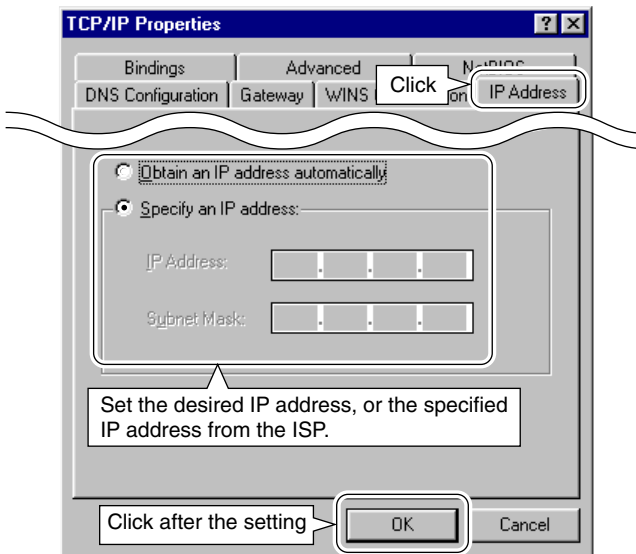
- ① Boot up Windows, then select the “Control Panel” in the start menu— “Settings.”
- ② Double click “Network.”



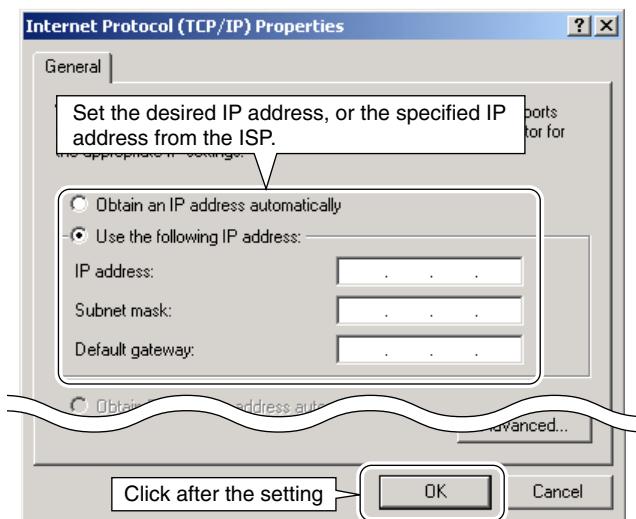
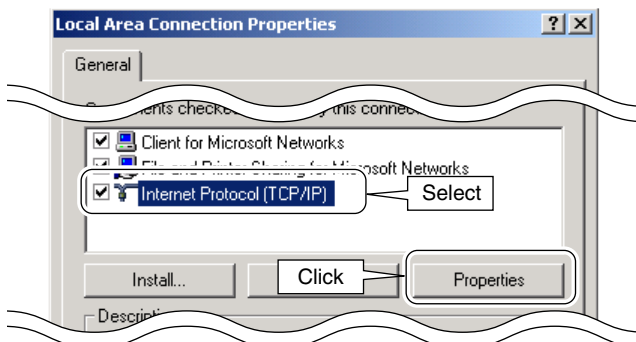
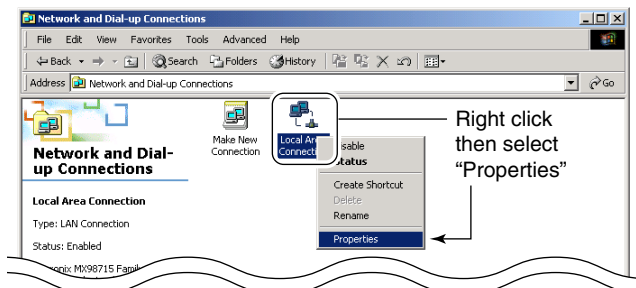
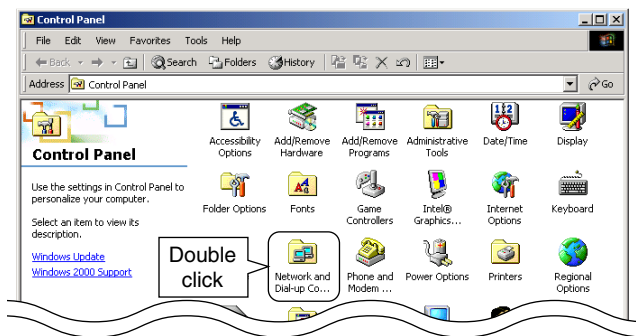
- ③ Select “TCP/IP -> Dial-Up Adapter” then click [Properties].



- ④ Click [IP Address] tab, then set the desired IP address, or the specified IP address from the ISP.
 - Set the subnet mask, when setting a fixed IP address or if specified.
 - After the setting, click [OK].
- ⑤ Click [OK] in “Network” then reboot the PC.



◇ Microsoft® Windows® 2000



- ① Boot up Windows, then select the “Control Panel” in the start menu—“Settings.”
- ② Double click the “Network and Dial-up Connections.”

- ③ Right click and select “Properties” in the Local Area Connections icon.

- ④ Select “Internet Protocol (TCP/IP)” then click [Properties].

- ⑤ Set the desired IP address, or the specified IP address from the ISP.
 - Set the subnet mask, when setting a fixed IP address or if specified.
 - After the setting, click [OK].
- ⑥ Click [OK] in the “Local Area Connections Properties” then reboot the PC.